

CHROMOJET

PRINTERS

Catalogue



DUBAI, UAE

- +971 4584 7058
- smsdubai@chromojetsms.com
- PO. BOX : 503415
- Dubai Production City - Dubai
United Arab Emirates

MUSCAT, OMAN

- +968 9703 6246
- oman@chromojetsms.com
- PO. BOX : 1594 p.c 131
- Shop 384 h , Way 4211 , Wadikabir,
Muscat , Sultanate of Oman

ABU DHABI, UAE

- +971 4584 7058
- auh@chromojetsms.com
- PO. BOX : 503415
- Work shop 3 - M-11 - Abu Dhabi
United Arab Emirates

JEDDAH, KSA

- +966 1226 14387
- jeddah@chromojetsms.com
- PO. BOX : 96027
- 2nd floor, off.no-203, Al ahmaal
Bussiness center,Sharfiya dist.

RIYAD , KSA

- +966 1226 14387
- jeddah@chromojetsms.com
- PO. BOX : 96027
- BLDG3 Shop 76-77, Central
commercial complex, KSA

 [smsdubai](#)

 [chromojetsms](#)

 [simple-media-solutions-llp](#)

 [simplemediasolutionsllc](#)

 +971 4584 7058

 smsdubai@chromojetsms.com

 www.chromojetsms.com

 Dubai Production City - Dubai, UAE

CH-1801/1802



Eco Solvent Printer (With 1 or 2 i3200-E1 Heads)



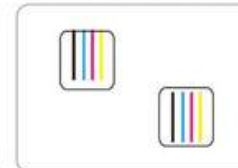
Eco Solvent Ink



Single I3200-E1 Head



Dual I3200-E1 Heads



* 1.8m Dual I3200 Print Heads Speed

720x1200dpi - 4pass

40 m 2/h

720x1800dpi - 6pass

27 m 2/h

Our range of wide format inkjet printers matches our knack for engineering and quality with your desire for impeccable performance and careless production. You can produce roll-to-roll indoor prints and long term outdoor signs. Wide applications in light box posters, customized car stickers, background wall cloth, label printing, advertising sign, subway advertising, shopping mall advertising signs etc.



● Technical Specifications

Model	A-1801S	A-1802S
Print Head	Single I3200 Print Heads	Dual I3200 Print Heads
Printing Technology	Piezoelectric Inkjet	
	Width 71.6 in. (1820 mm)	
Acceptable Media	Thickness Maximum 59 mil (1.5 mm)	
	Weight 132.2 lb. (60 kg)	
Printing Width	70.8 in. (1800 mm)	
Ink Cartridges	Type Eco Solvent Ink	
	Capacity 4*4 CISS (220ml ink cartridge with 1.5L ink tank)	
	Color 4 colors (Cyan, Magenta, Yellow, Black)	
Printing Resolution	Maximum 2400 dpi	
Printing Speed	4pass(720x1200dpi): 20 sqm/h	4pass(720x1200dpi): 40 sqm/h
	6pass(720x1800dpi): 14 sqm/h	6pass(720x1800dpi): 27 sqm/h
Media Heating System	Integrated post heater & Infrared Dryer & Fan system	
Interface	USB 3.0	
Power Supply	AC 220V ± 10%, 50/60 HZ	
Dimensions(with stand)	108(W)x 31(D)x61(H) in. (2800(W)x780(D)x1550(H) mm)	
Weight(with stand)	380 kg	
Package Dimensions	114(W)x30(D)x30(H) in.	
	2900(W)*780(D)*780mm(H)mm	
Package Weight	400 kg	
Environment	Power on	Temperature: 59 ℉ to 90 ℉ [15℃ to 32℃] (68 ℉ [20℃] / Humidity: 35 to 80% (no condensation)
	Power off	Temperature: 41 ℉ to 104 ℉ [5℃ to 40℃] / Humidity: 20 to 80% (no condensation)
Accessories	Print Heads, USB cable, media clamp, manual, drain bottle, ink cartridges, RIP software, etc.	



THK high-precision mute rail.



High-precision and high-stability tensioning pulley system.



The automatic cleaning assembly adds a single-way valve to increase the stability of the ink supply.



Automatic moisturizing cleaning assembly ensures the stability of head cleaning and improves working stability.



New pinch roller structure of three in group brings more stable feeding precision.



High quality DC servo motor with good stability and long life.



Infrared heater+cooling fan+ LCD temperature control panel, more precise control of the drying temperature.



External power supply, intelligent rolling system

CH-1601/1602

1.6m Eco Solvent Printer (with 1 or 2 i3200-E1 Heads)



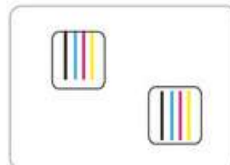
Eco Solvent Ink



Single i3200-E1 Head



Dual i3200-E1 Heads



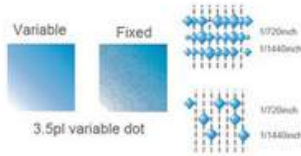
* 1.6m Dual i3200-E1 Print Heads Speed

720x1200dpi - 4pass	40 m 2/h
720x1800dpi - 6pass	27 m 2/h

Our range of wide format inkjet printers matches our knack for engineering and quality with your desire for impeccable performance and careless production. You can produce roll-to-roll indoor prints and long term outdoor signs. Wide applications in light box posters, customized car stickers, background wall cloth, label printing, advertising sign, subway advertising, shopping mall advertising signs etc.



Intelligent inkjet printing technology and variable dot ensure the perfect printing output, greatly improve the printing speed, and meet the user's requirements for printing quality and speed.



High speed micro piezoelectric inkjet printing technology A-1601S / A-1602S is equipped with single or dual i3200 print heads. It adopts advanced board control technology and industrial level design to ensure the durability of the print head .



● Technical Specifications

Model	A-1601S	A-1602S
Print Head	Single i3200-E1 Print Heads	Dual i3200-E1 Print Heads
Printing Technology	Piezoelectric Inkjet	
Acceptable Media	Width 63.8 in.(1620 mm) Thickness Maximum 59 mil(1.5mm) Weight 132.2 lb.(60 kg)	
Printing Width	63 in.(1600 mm)	
Ink Cartridges	Type Eco Solvent Ink Capacity 4*4 CISS (220ml ink cartridge with 1.5L ink tank) Color 4 colors (Cyan, Magenta, Yellow, Black)	
Printing Resolution	Maximum 2400 dpi	
Printing Speed	4pass(720x1200dpi): 21sqm/h 6pass(720x1800dpi): 14 sqm/h	4pass(720x1200dpi): 40sqm/h 6pass(720x1800dpi): 27 sqm/h
Media Heating System	Integrated post heater & Infrared Dryer & Fan system	
Interface	LAN	
Power Supply	AC 220V ± 10%, 50/60 HZ	
Dimensions(with stand)	102(W)x27(D)x81(H) in. (2600(W)x680(D)x1550(H) mm)	
Weight(with stand)	240 kg	
Package Dimensions	106(W)x30(D)x30(H) in. (2700(W)x760(D)x760(H) mm)	
Package Weight	260 kg	
Environment	Power on Temperature: 59 ℉ to 90 ℉ [15℃ to 32℃] (68 ℉ [20℃] / Humidity: 35 to 80% (no condensation) Power off Temperature: 41 ℉ to 104 ℉ [5℃ to 40℃] / Humidity: 20 to 80% (no condensation)	
Accessories	Print Heads, USB cable, media clamp, manual, drain bottle, ink cartridges, RIP software, etc.	



THK high-precision mute rail.



New pinch roller structure of three in group brings more stable feeding precision.



High-precision and high-stability tensioning pulley system.



High quality DC servo motor with good stability and long life.



Stable Bulk System Ensures Amazing Printing Speed



Infrared heater and cooling fan.



Automatic moisturizing cleaning assembly ensures the stability of head cleaning and improves working stability.



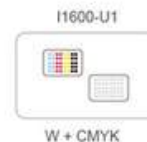
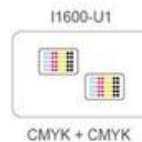
External power supply, intelligent rolling system

OR-1602/1802 UV

Economical UV roll to roll printer With 2 Epson i3200 U1 Printheads



UV Ink



* 1.6m/1.8m Double I1600-U1 Print Heads Speed (I3200-U1 heads optional)

CMYK - 720*600dpi 4pass	25 m 2/h
CMYK - 720*900dpi 6pass	21 m 2/h
CMYK - 720*1200dpi 8pass	17 m 2/h



APPLICATIONS : light box posters, car stickers, advertising hoardings, golden and silver paper, leather printing, high-end gift boxes, food packaging, labels, operation panel and switch printing, etc.

CMYK	W+CMYK
720x900dpi 21 sqm/h(6pass)	720x900dpi 11 sqm/h(6pass)
720x1200dpi 17 sqm/h(8pass)	720x1200dpi 8 sqm/h(8pass)

Technical Specifications

Model	A-1602UV	A-1802UV
Print Head	Double I1600-U1 Print Heads (3200-U1 Optional)	
Printing Technology	Piezoelectric Inkjet	
Acceptable Media	Width	63.7 in. (1620 mm)
	Thickness	Maximum 59 mil (1.5 mm)
	Weight	176 lb. (80 kg)
Printing Width	63 in. (1600 mm)	70.8 in. (1800 mm)
Ink Cartridges	Type	UV Ink
	Ink Supply	Bulk ink supply system with 500ml ink tank
	Color	CMYK / W+CMYK
Printing Resolution	Maximum 2400 dpi	
Speed	CMYK	6pass (720*900dpi) 21 m ² /h
	W+CMYK	6pass (720*900dpi) 11 m ² /h
Curing Unit	Water-cooling UV lamp	
Interface	Ethernet	
Power Supply	AC 220V ± 10%, 50/60 HZ	
Dimensions(with stand)	102(W)x30(D)x62(H) in.	110(W)x30(D)x62(H) in.
	(2600(W)x680(D)x1580(H) mm)	(2800(W)x750(D)x1580(H) mm)
Weight(with stand)	617 lb. (280 kg)	661 lb. (300 kg)
Packing Size	110(W)x30(D)x30(H) in.	114(W)x30(D)x30(H) in.
	(2800(W)x760(D)x760(H) mm)	(2900(W)x760(D)x760(H) mm)
Packing Weight	661 lb. (300 kg)	705 lb. (320 kg)
Environment	Power on	Temperature: 59 F to 90 F [15 C to 32 C] / Humidity: 35 to 80% (no condensation)
	Power off	Temperature: 41 F to 104 F [5 C to 40 C] / Humidity: 20 to 80% (no condensation)

Two-layer printing technology for color conversion

The 1st layer

White Ink

The 2st layer

Color Layer



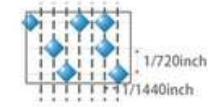
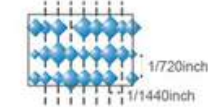
Leadshine DC Servo Motor

THK high precision mute rail

Igus mute drag chain, quite working environment guaranteed

Automatic up-and-down capping station, protects the print head more effectively

Two Eposn I160-U1 Head array (13200 heads Optional)



Equipped with two I1600 print heads, 3.5pl ultra-small ink droplets

1.6m/1.8m UV roll to roll printer dedicated for white + color printing

Scientific head array, high-precision bottom plate, craftsmanship of quality

Light weight and compact design, saves workshop space



500ml large capacity ink supply system



High quality imported THK high precision guide rail



Moisturizing cleaning assembly



Automatic take-up



LED backlight



Adjustable pinch rollers

CH-1602/1802 UV

Eco Solvent Printer (With 2 Heads)



CHROMO Eco Solvent Ink



Two DX5 Heads



Two I3200 Heads



> New front design without screws shows up with fresh appearance.

* 1.8m Dual I3200 Print Heads Speed

360x1800dpi - 3pass	55	m2/h
720x1200dpi - 4pass	40	m2/h
720x1800dpi - 6pass	27	m2/h

Our range of wide format inkjet printers matches our knack for engineering and quality with your desire for impeccable performance and careless production. You can produce roll-to-roll indoor prints and long term outdoor signs. Wide applications in light box posters, customized car stickers, background wall cloth, label printing, advertising sign, subway advertising, shopping mall advertising signs etc.



● Technical Specifications

Model	OR-1800	OR-3200
Print Head	Dual I3200 Print Heads	Dual I3200 Print Heads
Printing Technology	Piezoelectric Inkjet	
Acceptable Media	Width	71.6 in.(1820 mm)
	Thickness	Maximum 59 mil(1.5 mm)
Ink Cartridges	Capacity	4*4 CISS (220ml ink cartridge with 1.5L ink tank)
	Color	4 colors (Cyan, Magenta, Yellow, Black)
Printing Resolution	Maximum 1440 dpi	Maximum 2400 dpi
Printing Speed	4pass(720x720dpi): 354 sqft (33 sqm/h)	3pass(360x1800dpi): 667 sqft (62 sqm/h)
	6pass(720x1080dpi): 279 sqft (26 sqm/h)	4pass(720x1200dpi): 506 sqft (47sqm/h)
	8pass(720x1440dpi): 193 sqft (18 sqm/h)	6pass(720x1800dpi): 334 sqft (31 sqm/h)
Media Heating System	Integrated post heater & Infrared Dryer & Fan system	
Interface	LAN	
Power Supply	AC 220V ± 10%, 50/60 HZ	
Dimensions(with stand)	125(W)x38(D)x55(H) in.	180(W)x38(D)x62(H) in.
	(3213(W)x970(D)x1388(H) mm)	(4580(W)x970(D)x1580(H) mm)
Weight(with stand)	882 lb. (400 kg)	2204 lb. (1000 kg)
Package Dimensions	Entirely Packing: 133(W)x45(D)x62(H) in. (3380(W)x1150(D)x1610(H)mm)	194(W)x44(D)x71(H) in.
	Split Packing: 132(W)x40(D)x40(H) in. (3360(W)x1020(D)x1020(H) mm)	(4940(W)x1130(D)x1810(H)mm)
Package Weight	Entirely Packing: 1102.5 lb. (500 kg) Split Packing: 1058.4 lb. (480 kg)	2535 lb. (1150 kg)
Environment	Power on	Temperature: 59 ℉ to 90 ℉ [15 C to 32 C] (68 ℉ [20 C] / Humidity: 35 to 80% (no condensation)
	Power off	Temperature: 41 ℉ to 104 ℉ [5 C to 40 C] / Humidity: 20 to 80% (no condensation)
Accessories	Dual 4720 Print Heads, USB cable, media clamp, manual, drain bottle, ink cartridges, RIP software, etc.	



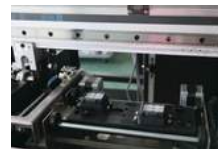
THK high-precision mute rail.



High-precision and high-stability tensioning pulley system.



The automatic cleaning assembly adds a single-way valve to increase the stability of the ink supply.



Automatic moisturizing cleaning assembly ensures the stability of head cleaning and improves working stability.



New pinch roller structure of three in group brings more stable feeding precision.



High quality DC servo motor with good stability and long life.



Infrared heater and cooling fan.



External power supply, intelligent rolling system

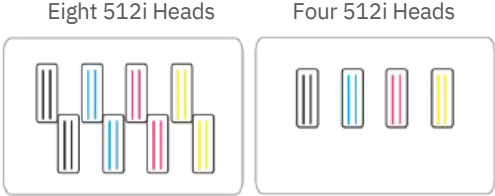
OR-CK32-512i(B)

High Quality Solvent Printer



CHROMO
Eco Solvent Ink

C M Y K



* Eight Konica 512i Print Heads

360x360dpi - 2pass	220 m2/h
360x540dpi - 3pass	140 m2/h
480x360dpi - 2pass	170 m2/h
480x540dpi - 3pass	100 m2/h



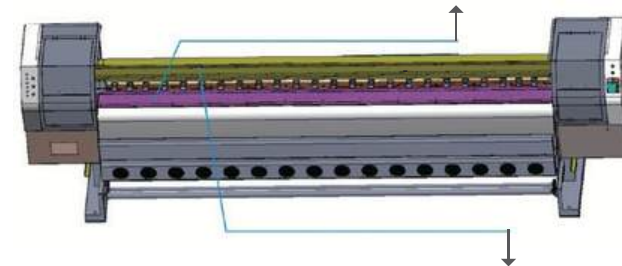
- Upgraded printer structure makes high speed stable printing available.
- New design leaves room for computer.
- 400W high power Panasonic motor leads high speed printing to be more stable.

Eight Konica 512i Print Heads	2pass (360*360dpi)	220sqm/h
	3pass (360*540dpi)	140sqm/h
	2pass (480*360dpi)	170sqm/h
	3pass (480*540dpi)	100sqm/h

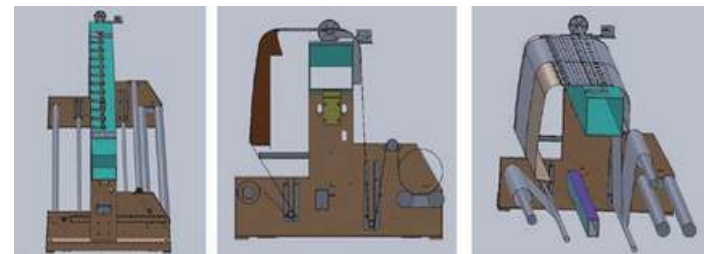
● Technical Specifications

Model	OR-CK32-512i(4 heads)	OR-CK32-512i(8 heads)
Print Head	Four Konica 512i Print Heads	Eight Konica 512i Print Heads
Printing Technology	Piezoelectric Inkjet	
Acceptable Media	Width	126.4 in.(3210 mm)
	Thickness	Maximum 78.7 mil(2 mm)
	Weight	176 lb.(80 kg)
Printing Width	126 in.(3200 mm)	
Ink Cartridges	Type	Solvent Ink
	Capacity	Continual Ink Supply System (5L Bottle Ink)
	Color	4 colors (Cyan, Magenta, Yellow, Black)
Printing Resolution	Maximum 720 dpi	
Printing Speed	2pass (360*360dpi) :	1184sqft (110sqm/h)
	3pass (360*540dpi) :	807sqft (75sqm/h)
	2pass (480*360dpi) :	1023sqft (95sqm/h)
	3pass (480*540dpi) :	646sqft (60sqm/h)
Media Heating System	Integrated tri-heater system	
	Interface	USB 2.0
Power Supply	AC 220V ± 10%, 50/60 HZ	
Dimensions(with stand)	195(W)x45(D)x63(H) in.	
	(4960(W)x1150(D)x1600(H) mm)	
Weight(with stand)	1587 lb. (720 kg)	
Package Dimensions	Entirety Packing : 195(W)x44(D)x71(H) in. (4940(W)x1130(D)x1810(H) mm)	
	Split Packing : 196(W)x32(D)x44(H) in. (4975(W)x830(D)x1130(H) mm)	
Package Weight	1807 lb. (820 kg)	
Environment	Power on	Temperature: 68 ℉ to 90 ℉ [20 ℃ to 32 ℃] / Humidity: 35 to 80% (no condensation)
	Power off	Temperature: 41 ℉ to 104 ℉ [5 ℃ to 40 ℃] / Humidity: 20 to 80% (no condensation)
Accessories	USB cable, media clamp, manual, ink cartridges, RIP software, etc.	

The print platform precision is 3300mm±0.1mm.



The THK guide rail precision is 4400mm±0.1mm.



Integrated structure makes higher take up, feeding accuracy.

CHROMOJET

OR-5800

LED-UV Inkjet Printer

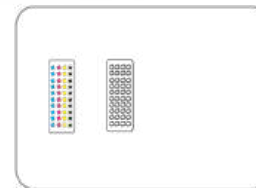
Multilayer printing
to build layered



CHROMO UV Ink

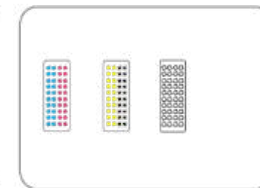


2 print heads



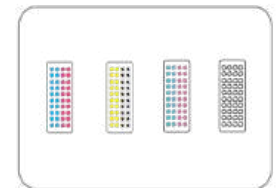
CMYK+W

3 print heads



CMYK+W

4 print heads



CMYKLC LM+W



APPLICATIONS : light box posters, customized car stickers, background wall cloth, gold paper and silver paper printing, leather printing, high-end gift box printing, food packaging printing, Label printing, operation panel & switch printing etc.

OR-5800 (B) 6PASS (720X900dpi) :

CMYK (3 heads)	1 Layer	20.5
CMYK+W / W+CMYK (3 heads)	2 Layers	m2/h
CMYK+W+CMYK (3 heads)	3 Layers	10.3

Technical Specifications

Model	OR-5800 (A) OR-5800 (B) OR-5800 (C)
Print Head	Two Industrial Print Heads Three Industrial Print Heads Four Industrial Print Heads
Printing Technology	Piezoelectric Inkjet
Acceptable Media	Width 71.6 in.(1820 mm)
	Thickness Maximum 39 mil(1 mm)
	Weight 176 lb.(80 kg)
Printing Width	70.8 in.(1800 mm)
Ink Cartridges	Type UV Ink
	Capacity Continual Ink Supply System (1.5L ink tank)
	Color CMYK / CMYK + WCMYK / CMYK + WCMYKLcLm / CMYKLcLm + W CMYK + W + CMYKCMYK + W + CMYKCMYKLcLm + W + CMYKLcLm
Ink Curing Unit	Dual UV LED Lamps
Printing Resolution	Maximum 1200 dpi
Interface	USB 2.0
Power Supply	AC 220V ± 10%, 50/60 HZ
RIP	Onyx / Photoprint(Caldera Optional)
Dimensions(with stand)	126(W)x41(D)x56(H) in. (3210(W)x1048(D)x1420(H) mm)
Weight(with stand)	1212 lb. (550 kg) 132(W)x47(D)x62(H) in.
Package Dimensions	(3360(W)x1200(D)x1590(H) mm)
Package Weight	1322 lb. (600 kg)
Environment	Power on Temperature: 59°F to 90°F [15°C to 32°C] (68°F[20°C] / Humidity: 35 to 80% (no condensation)
	Power off Temperature: 41°F to 104°F [5°C to 40°C] / Humidity: 20 to 80% (no condensation)
Accessories	USB cable, media clamp, manual, drain bottle, ink cartridges, RIP software, etc.Z VV

- - High efficient uv-led technology;
- - Four layers printing, exquisite and vivid color output;
- - International environmental standard UV inks;
- - Odorless, LESS environmental impact;
- - Optional seven-color print mode (CMYKLCLM+W)
- - Superior image quality on a wide array of medias with uv ink.

Adopting 4 Layers Printing Technology, Enabling the Backlight Patterns Change Magic

With the interior light on, this four layers printing technology 'Color + Black + White + Color', can achieve the magically changing effect of the patterns from backlight.

The ability of switching the patterns through day and night, external and interior fully reflecting the performance techniques used in new advertising era, thus increasing the added value of your advertising.



5 Layers Printing - Double-sided Application

'Color' + 'White' + 'Black' + 'White' + 'Color'
3D stereo images, new applications for window stickers, can print different design patterns on both sides.



CHROMOJET

OR-6800

LED-UV Inkjet Printer (Gen5 or Gen6 optional)

COLOR+W+COLOR

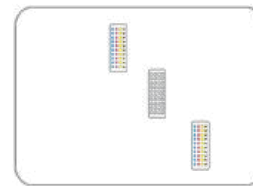
Multilayer printing
to build layered



CHROMO UV Ink

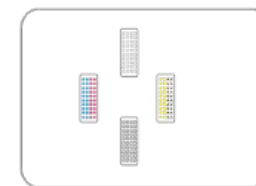


CMYK+W+CMYK



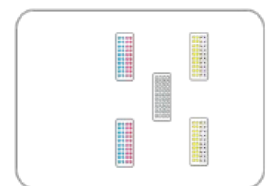
OR-6800E

W+CMYK+Varnish



OR-6800V

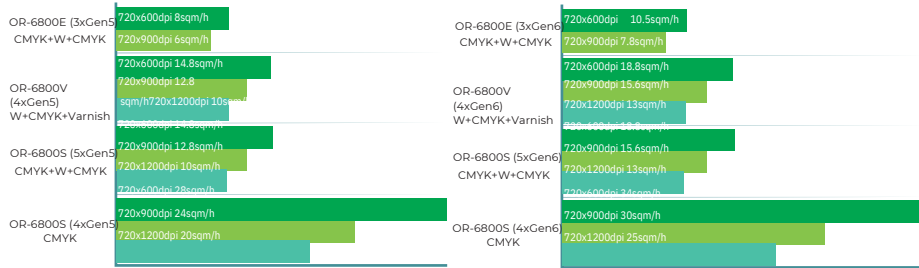
CMYK+W+CMYK



OR-6800S



APPLICATIONS : light box posters, customized car stickers, background wall cloth, gold paper and silver paper printing, leather printing, high-end gift box printing, food packaging printing, Label printing, operation panel & switch printing etc.



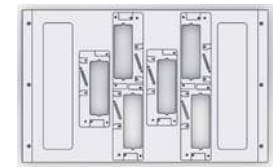
● Technical Specifications

Model	OR-6800E OR-6800V OR-6800S
Print Head	3 Industrial Print Heads 4 Industrial Print Heads 5 Industrial Print Heads Piezoelectric Inkjet
Printing Technology	71.6 in.(1820 mm)
Acceptable Media	Width Maximum 39 mil(1 mm)
	Thickness 176 lb.(80 kg)
	Weight 70.8 in.(1800 mm)
Printing Width	UV Ink
Type	Continual Ink Supply System (1.5L ink tank)
Ink Cartridges Capacity	CMYK + W + CMYK W + CMYK + Vainish CMYK + W + CMYK
Color	Dual UV LED Lamps
Ink Curing Unit	Maximum 1200 dpi
Printing Resolution	USB 3.0
Interface	AC 220V ± 10%, 50/60 HZ
Power Supply	Onyx(Caldera/PhotoPrint Optional)
RIP	126(W)x41(D)x56(H) in. (3210(W)x1048(D)x1420(H) mm)
Dimensions(with stand)	1543 lb. (700 kg)
Weight(with stand)	131(W)x42.5(D)x58.7(H) in. (3340(W)x1080(D)x1490(H) mm)
Package Dimensions	1764 lb. (800 kg)
Package Weight	Temperature: 59°F to 90°F [15°C to 32°C] (68°F[20°C] / Humidity: 35 to 80% (no condensation)
Environment	Power on Temperature: 41°F to 104°F [5°C to 40°C] / Humidity: 20 to 80% (no condensation)
	Power off USB cable, media clamp, manual, drain bottle, ink cartridges, RIP software, etc.
Accessories	

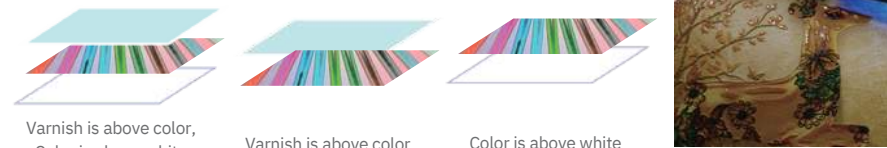
- - New Ricoh Gen6 head optional, faster speed, higher precision;
- - International environmental standard UV inks;
- - Industrial grade frame design, simple operation, stable output;
- - Small size, massive production capacity for bulk orders;
- - Available high-end RIP software, the best partner of large format equipment ;
- - Odorless, LESS environmental impact;
- - Superior image quality on a wide range of medias with uv ink.

Industrial Heads , Massive Production Capacity for Bulk Order

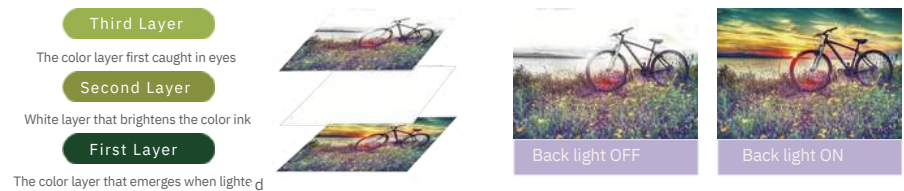
Equipped with three staggered lined industrial print heads, making it be your best weapon to improve profitmargins with its high speed output.



4 Industrial Heads, Varnish output ,more personalized applications customization



3 layers printing to build layered transformative graphics for backlit application



One machine for multiple printing solutions under different color modes,can meet requirements from differ e nt customers .It can also replace some high-end eco solvent printers which can be efficient and environmental friendly.

CHROMOJET

OR-8800

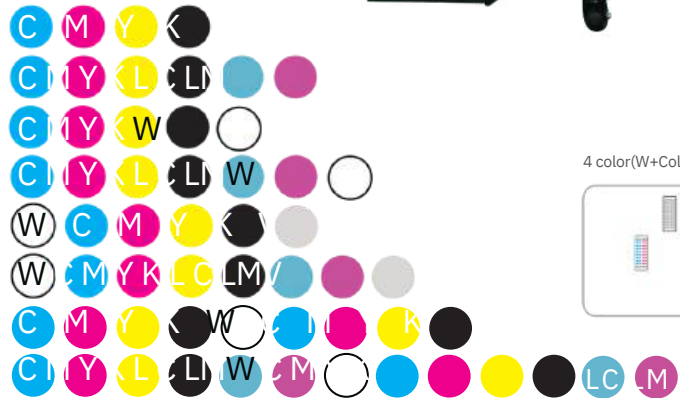
2m High End Soft Film UV Printer (Gen5 or Gen6 optional)

COLOR+W+COLOR

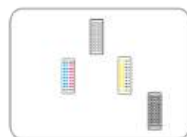
Multilayer printing
to build layered



CHROMO UV Ink

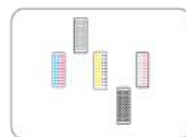


4 color(W+Color+Varnish)

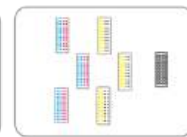


OR-8800 (V)

6 color(W+Color+Varnish)

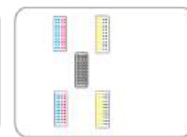


4color(Color+White+Color)

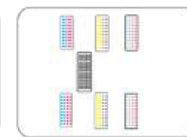


OR-8800 (S)

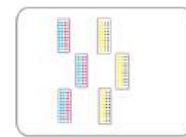
4color(Color+White+Color)



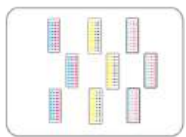
6color(Color+White+Color)



4color(CMYK)



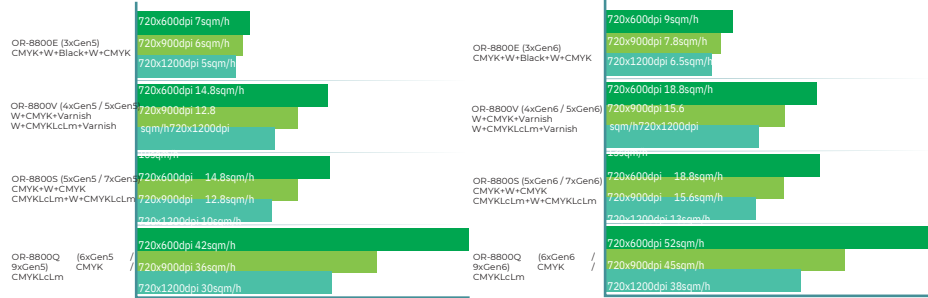
6color(CMYKcLm)



OR-8800 (Q)



Wide applications in light box, soft film, customized car stickers, scraping fabric, vinyl, light film, wallpaper, wall fabric, canvas, silk fabric, leather and etc.



Technical Specifications

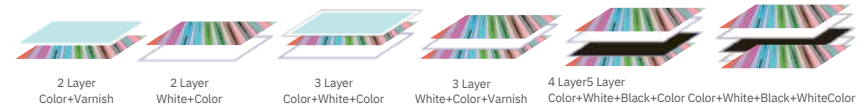
Model	OR-8800(V) OR-8800(S) OR-8800(Q)	
Print Head	4/5 Print Heads 5/7 Print Heads 6/9 Print Heads	
Printing Technology	Piezoelectric Inkjet	
Acceptable Media	Width	80.7 in.(2050 mm)
	Thickness	Maximum 39 mil(1 mm)
	Weight	220 lb.(100 kg)
Printing Width	78.7 in.(2000 mm)	
Ink Cartridges	Type	UV Ink
	Capacity	Continual Ink Supply System (1.5L ink tank)
	Color	W+CMYK+Varnish CMYK+W+CMYK CMYK W+CMYKLcLm+Varnish CMYKLcLm+W+CMYKLcLm CMYKLcLm
Ink Curing Unit	Dual UV LED Lamps	
Printing Resolution	Maximum 1200 dpi	
Interface	USB 3.0	
Power Supply	AC 220V ± 10%, 50/60 HZ	
RIP	Onyx(Caldera)/PhotoPrint Optional	
Dimensions(with stand)	128(W)×41(D)×60(H) in.	(3520(W)×1050(D)×1520(H) mm)
	2094 lb. (950 kg)	
Weight(with stand)	148(W)×45(D)×65(H) in.	
Package Dimensions	(3760(W)×1150(D)×1650(H) mm)	
	2204 lb. (1000 kg)	
Package Weight	Power on	Temperature: 59°F to 90°F [15°C to 32°C] (68°F[20°C] / Humidity: 35 to 80% (no condensation)
Environment	Power off	Temperature: 41°F to 104°F [5°C to 40°C] / Humidity: 20 to 80% (no condensation)
	USB cable, media clamp, manual, drain bottle, ink cartridges, RIP software, etc.	

Accessories

- - New Ricoh Gen6 head optional, faster speed, higher precision;
- - Added water-cooled platform to improve output picture quality;
- - Industrial grade frame design, simple operation, stable output;
- - Small size, massive production capacity for bulk orders;
- - Upgraded dual guide rails ensure more stable printing;
- - The media system with torque motor and air-shaft makes more stable rolling media;
- - Equipped soft film tension system offers suitable pressure for various media.

4-9 Industrial Heads, designed for high quality six color and multi-layer orders

Equipped with three staggered lined industrial print heads, making it your best weapon to improve profit margins with its high speed output. New Gen6 head it can easily achieve perfect picture quality with high speed or low precision, and the output is more delicate and realistic.



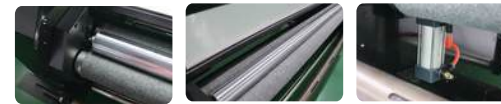
6Color

Optional six-color + white print mode exquisite color output



C/M/Y/K/Lc/Lm C/M/Y/K

Soft film feeding system



Air-driven moisture system, pinch roller and soft film feeding system

Air-shaft system

Front and back adjust air-shaft roll to install media more conveniently and smoothly;



Anti-static bar



Standard configuration anti-static bar can be used to eliminate static electricity. Achieve precise placement of ink dots.

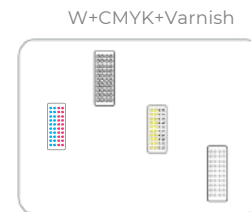
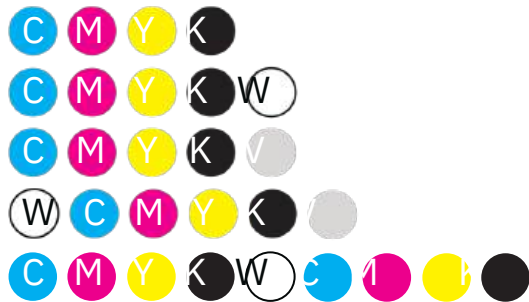
OR-3200UV Pro

High Speed UV Roll to Roll Printer (Gen5 or Gen6 optional)

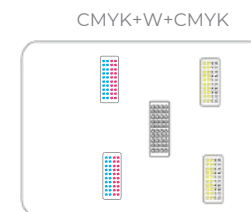
Multilayer printing
to build layered



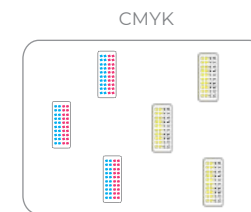
CHROMO UV Ink



OR-3200UV Pro (V)



OR-3200UV Pro (S)



OR-3200UV Pro (Q)



Wide applications in light box, soft film, 3P fabric, scraping fabric, vinyl, light film, wallpaper, wall fabric, canvas, silk fabric, leather and etc.

6 Gen5 print heads arrangement (CMYK) :

Front	Light	67 m ² /h
600x600dpi	Front	45 m ² /h
Light 600x900dpi		33 m ² /h
Backlit 6 00x900dpi		28.6 m ² /h

6 Gen6 print heads arrangement (CMYK) :

Front	Light	87
600x600dpi	Front	m ² /h
Light 600x900dpi		58
Backlit 6 00x900dpi		m ² /h

Technical Specifications

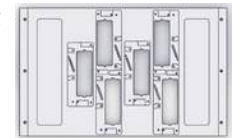
Model	OR-3200UV Pro (V)	OR-3200UV Pro (S)	OR-3200UV Pro (Q)
Print Head	Four Industrial Heads	Five Industrial Heads	Six Industrial Heads
Printing Resolution	900dpi, 1200dpi		
Width	210-3250 mm		
Acceptable Media Thickness	Maximum 0.039 mil (1 mm)		
Diameter	Heavy-duty Media Feeding System has no limit for roll diameter of media Economic Media Feeding System is suitable for roll media diameter less than 210mm		
Weight	220 lb.(100 kg) 210-3200mm		
Printing Width	LED UV		
Type	Continual Ink Supply System (1.5L ink tank)		
Ink Capacity	CMYK+W+Varnish CMYK / CMYK+W / CMYK+W+CMYK CMYK		
Ink Curing Unit	Dual UV LED Lamps		
Printing Resolution	Maximum 1200 dpi		
Interface	USB 2.0		
Power Supply	AC 220V ±5 %, 16A, 50Hz ±1		
Dimensions(with stand)	213(W)x47(D)x62(H) in.5410(W)x1200(D)x1570(H) mm		
Weight(with stand)	1200 kg		
Package Dimensions	222(W)x45(D)x71(H) in.5650(W)x1150(D)x1800(H) mm		
Package Weight	1700 kg		
Environment	Power on	Temperature: 59°F to 90°F [15°C to 32°C] / Humidity: 35 to 80% (no condensation)	
	Power off	Temperature: 41°F to 104°F [5°C to 40°C] / Humidity: 20 to 80% (no condensation)	
Accessory	USB cable, media clamp, manual, ink cartridges, RIP software, etc.		

- - High-efficiency UV LED technology;
- - Environmentally friendly UV ink meets international environment standards;
- - Industrial-grade structure, easy to operate, high stability;
- - Upgraded dual guide rails ensure more stable printing;
- - The media system with torque motor and air-shaft makes more stable rolling media;
- - Equipped soft film tension system offers suitable pressure for various media.

With LED UV curing technology, OR-3200UV Pro is one of the most competitive UV roll to roll printers which characterizes with excellent quality, high stability and easy operation. OR-3200UV Pro enables to make high quality design in the most cost-effective way

Maximum 6 Ricoh Gen5/G6 print heads

Three lines print heads in staggered layout makes the highest productivity and various applications with optional CMYK, W+CMYK, CMYK+W, CMYK+W+CMYK (three layers) and W+CMYK+V (three layers) color modes.



More stable upgraded media feeding system



New designs including adjustable air-driven pinch roller system, upgraded media roller surface and feed motor control system ensure stability of media feeding.

NEW soft film feeding system

Air-driven moisture system, pinch roller and soft film feeding system



OR-AEJ18 or OR-BEJ18

Direct Sublimation Printer



CHROMO
Sublimation Ink



Two DX5 Heads



Two I3200 Heads



Three DX5 Heads



Three I3200 Heads



* 1.8m Three I3200 Print Heads Speed

360x1800dpi - 3pass	95 m2/h
720x1200dpi - 4pass	74 m2/h
720x1800dpi - 6pass	50 m2/h



- Directly print on fabric.
- Vivid color performance with high color fastness.
- Print and heat without paper transfer.
- High performance chemical blower ensures friendly environment.

● Technical Specifications

Model	OR-1800T/3200T
Print Head	Dual I3200 Print Heads Three I3200 Print Heads
Printing Technology	Piezoelectric Inkjet
Width	72 in.(1830 mm)
Acceptable Media Thickness	Maximum 39 mil(1 mm)
Weight	110 lb.(50 kg)
Printing Width	70.8 in.(1800 mm)
Type	Dye Sublimation Ink
Ink Cartridges Capacity	4*4 CISS (220ml ink cartridge with 1.5L ink tank)
Color	4 colors (Cyan, Magenta, Yellow, Black)
Printing Resolution	Maximum 1440 dpi Maximum 3600 dpi
Printing Speed	4pass: 461 sqft (43 sqm/h) 3pass: 1022 sqft (95 sqm/h) 6pass: 322 sqft (30 sqm/h) 4pass: 797 sqft (74 sqm/h) 8pass: 247 sqft (23 sqm/h) 6pass: 560 sqft (52 sqm/h)
Media Heating System	Integrated post printer heater & Fabric Heater
Interface	LAN
Power Supply	AC 220V ± 10%, 50/60 HZ
Dimensions(with stand)	148.5(W)x33.5(D)x70.5(H) in. (3770(W)x850(D)x1790(H) mm)
Weight(with stand)	1433 lb. (650 kg)
Package Dimensions	Printer: 132(W)x41(D)x63(H) in. (3360(W)x1050(D)x1590(H) mm) Heater: 132(W)x45(D)x47(H) in. (3350(W)x1150(D)x1200(H) mm)
Package Weight	Printer: 1102.5 lb. (500 kg) Heater: 992 lb. (450 kg)
Environment	Power on Temperature: 59°F to 90°F [15°C to 32°C] (68°F[20°C] / Humidity: 35 to 80% (no condensation) Power off Temperature: 41°F to 104°F [5°C to 40°C] / Humidity: 20 to 80% (no condensation)
Accessories	USB cable, media clamp, manual, drain bottle, ink cartridges, RIP software, etc.



THK high-precision mute rail.



Stable Bulk System Ensures Amazing Printing Speed



High-precision and high-stability tensioning pulley system.



High quality DC servo motor with good stability and long life.



Automatic moisturizing cleaning assembly ensures the stability of head cleaning and improves working stability.



New pinch roller structure of three in group brings more stable feeding precision.

Flat Bed Cutter Plotter

MOMO 600*900mm & 600*450mm Flatbed Cutter





Support auto contour cut
Professional registration mark sensor easily detecting position. Support contour cut and repeat cut with high precision



4.3 inches LED Screen Display
Sensitive touch, simple use and one key return to last step. Visually operation, free adjustment more user-friendly



Increased Cutting Force and Speed
2000g large down force, cut most material under 1mm. 800mm/s high working speed, more efficient



Improved Media Feeding Roller
Reliable grit-rolling design, more stable performance. 5 adjustable push rollers and pinchers, flexible location



Built-in Camera Fast and Accurate
No limit to material, support reflective and transparent material. Easily auto detect any registration mark of any color or shape



Double Head Device High Efficiency
Sharpe Roland Blade, half cut and die cut. Advanced Crease Tool, creasing line for folding

Technology Features

Model	M-F645	M-F690	M-F912
Max cutting size	600*450mm	600*900mm	1200*900mm
Working mode	Vacuum absorptin	Vacuum absorptin	Vacuum absorptin
Operation interface	Touch Screen	Touch Screen	Touch Screen
Cutting head	Dual Head	Dual Head	Dual Head
Cutting accuracy	0.01mm	0.01mm	0.01mm
Repeat accuracy	0.05 mm	0.05 mm	0.05 mm
Maximum moving speed	800mm/s	800mm/s	800mm/s
Maximum cutting speed	700mm/s	700mm/s	700mm/s
Maximum cutting force	2000g	2000g	2000g
Output mode	U-disk/WIFI/ USB Cable	U-disk/WIFI/ USB Cable	U-disk/WIFI/ USB Cable
Power	< 100W	< 100W	< 100W
Working environment	+5°C - +35°C	+5°C - +35°C	+5°C - +35°C
Packing size	1000*850* 850mm	1330*1040* 850mm	1650*1280* 850mm
Gross weight	200KG	220KG	260KG



Vacuum absorptin



Gantry dual driver



Dual head cut



Large force



Dust-proof brush



Touch screen control



Multiple connection



Emergency switch



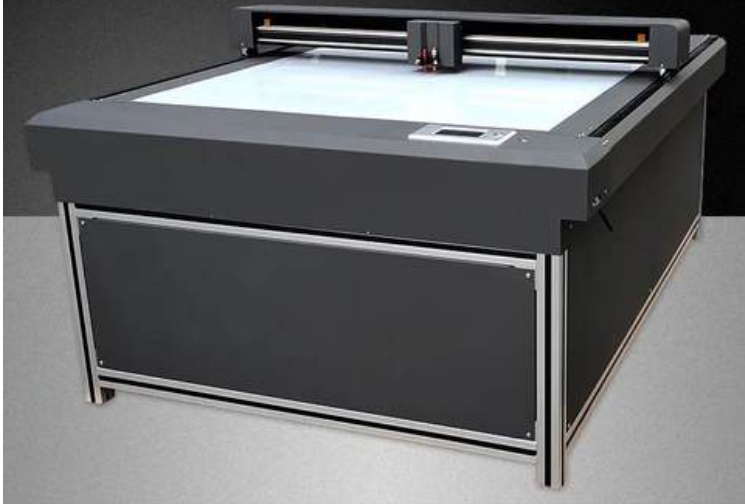
Built-in camera

Software	SignMaster Cut+ARMS
	SignMaster Pro (Professional version) (Fill feature, vector JPG, BMP, etc)
Silencer	Silencer to lower the vacuum machine noise

Digital Platform Cutting

Dual head! Cutting and creasing at one time

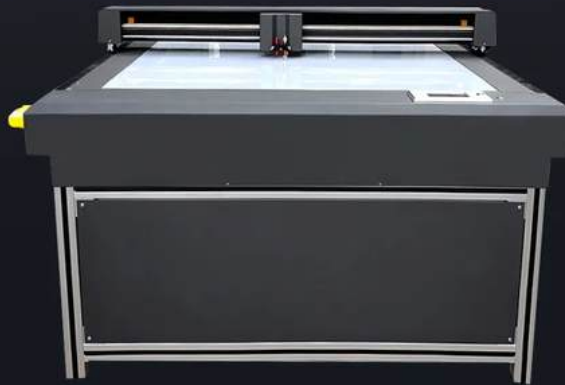
paperboard copper paper silk screen film packaging



Flatbed Cutting Plotter

One machine, multiple functions

Automatic contour detect Dual head working Vacuum absorption Scanning positioning



Support WIFI, U disk, USB cable
Multi-connection way with computer



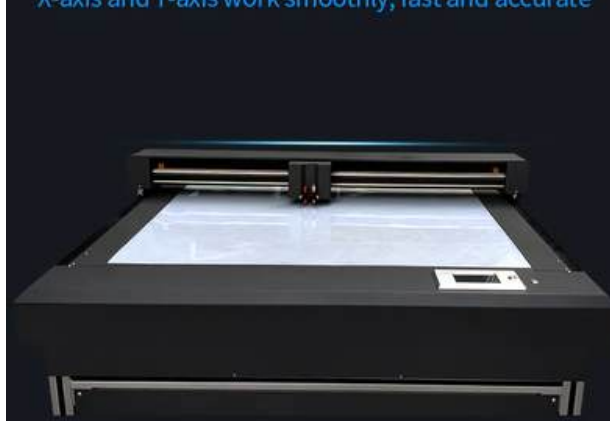
Vacuum Absorption

strong adsorption / stable material / no indentation / no oblique cutting



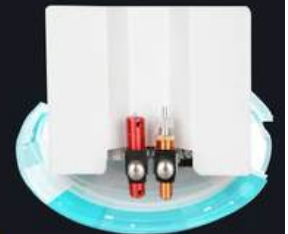
Dual Driver Gantry System

X-axis and Y-axis work smoothly, fast and accurate



Increased Cutting Force

Easily cut all kinds of hard cardboard, film, paper card, leather, flexiboard, etc.



2000g force



SELLING POINT / 01

PP Gift Box Creasing And Cutting

Dual head two working processes, cutting and creasing in one step.



SELLING POINT / 02

Gift Package Creasing And Cutting

For all kinds of inside packaging creasing and cutting



SELLING POINT / 03

Label Cutting of Various kinds of Material



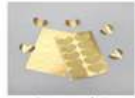
white cardboard



double copper paper



craft paper



aluminum foil



gold paperboard



silver paperboard



grey paperboard



special paper

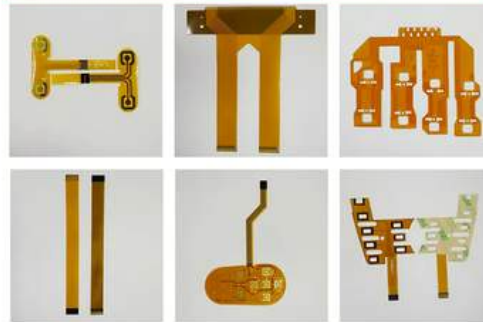


white paperboard

SELLING POINT / 04

Button Sticker and Flexboard Die Cut

Button sample cut, FPC flexboard die cut



SELLING POINT / 05

EVA Foam Paper Cutting

All paper flower handcraft cutting



SELLING POINT / 06

Carbon Fiber Cutting

Sticker deco material cutting



SELLING POINT / 07

PET Mobile Phone Back Film Cutting

Contour cutting of all kinds of phone back film



SELLING POINT / 08

Heat-shrinkable Film Edge Creasing and Cutting

Classic hairpin heat-shrinkable film cutting



E-620 DTF Max

Not sure which direct-to-film printer is right for you and your project? Come to OEM customization

Our vision is to become a one-stop manufactory that meets your personalized customization requirements for DTF equipment, providing excellent DTF machines and factory services. And we can provide your company with powder shaker machine matching items to meet the needs of different dealers for personalized brand customization !

- Self-contained heads for shipment, Head without installation ;
- Tension bar media feeding system ;
- Automatic print head moistening & Ink heating to prevent print head from clogging ;
- Powder Control System ;
- Built-in smoke filter (upgradeable) ;
- Electric pinch roller control systems .



OUR DTF GOAL

- *Make DTF more intelligent and simple*
- *Fast installation and easy to use -customer satisfaction Reduce*
- *amortization time to a minimum*
- *Create compact and reliable DTF printing solution*

Specially designed for dtf printer, Belonging to SD GROUP, we have four inkjet equipment production workshops in China, with a total factory area of more than 20,000 squaremeters, and we have more than 300 long-term employees. There are more than 50 after-sales team and more than 30 R&D personnel. Several after-sales personnel have more than 20 years of after-sales experience, and the R&D personnel have a large number of senior engineers with more than 10 years of R&D experience, 20 overseas engineers with many years of experience, 24 Hours of on-duty service !



E-620 DTF Max

HIGH VOLUME DTF PRINTING SOLUTION



SPECIFICATION

T-shirt Digital Heat Transfer Printing Machine

Model	E-620 DTF MAX Power Shaker
Print Head	2/4 Print Heads
Printing Technology	Piezoelectric Inkjet
Acceptable Media	Width 620 mm
	Thickness Maximum 39 mil(1 mm)
Printing Width	600 mm
Ink Cartridges	Type Transfer Pigment Ink
	Capacity Continual Ink Supply System (220ML)
	Color C M Y K + W
Applicable Medium	Transfer film
Color Manage	ICC or density curve
Inkjet Refilling System	Powder & color fixing machine
	RJ-45/LAN
	Main top & PhotoPrint
RIP Software	50HZ/60HZ,220V/110V/10A
Power Supply	20°C to 28°C
Environment	Temperature 15 to 25°C
	Humidity 40% to 75%
Printer Dimensions(With Stand)	L1900mm*W930mm*H1320mm
Packing Dimensions	165kg
Weight	

Shaking Powder and Color Fix Machine

	A-620 MAX Power Shaker
Media Width	0-600mm
Applicable Medium	Nylon, Chemical Fiber, Cotton, Leather, Swimwear, Wetsuit, PVC, EVA, etc.
Powder Control	Powder shake control, powder direction and volume control
Heating & Drying Function	Multi-stage heating system, drying, cold air fan function
Rewind Function	Automatic induction winding
Electrical Parameters	Rated Voltage: 220V
	Rated Power: 3.42KW
	Rated Current: 20A
Packing Size & Weight	1900*1120*1180mm
	G.W. 235kg N.W.210kg
Powder Shaker Size	1780*980*1040mm / 1780*1100*1040mm (Built-in smoke filter)

* Dual Print Heads Speed		* Four Print Heads Speed	
360x1800dpi	- 12	360x1800dpi	- 24
4pass	m/h 9	4pass	m/h



E-620 DTF Max

HIGH VOLUME DTF PRINTING SOLUTION

● ENJOY PRINT DTF INKS

All our DTF inks are specially developed and test to ensure vivid colors and maximum fastness

- Highest health standards
- Vivid colors



● WIDE RANGE OF PRINTING SUPPLIES

ENYOY PRINT DTF supports wide range of printing supplies

- All ENJOY PRINT DTF supplies are certificated with CE
- Various types of powders (white and black)
- Various types of DTF films (dazzling film/warm film/luminous film/single side film/double side film)



ENJOY PRINT DTF is carefully designed to reduce maintenance to a minimum. With popular RIPsoftware each print will be produced in a quality way beyond any competition, but still ainkjet dtf every aspect of the print will be optimized in order to make it cost effective.

More Intelligent

Low Maintenance

High volume production

Self preservation function

More convenient operation

With upgradeable options



E-620 DTF Max

HIGH VOLUME DTF PRINTING SOLUTION

Applications of DTF Printer

Commonly used products such as T-shirts, hats, backpacks, lanyards, shoes and more to create unique fashion pieces. It can also be used in denim clothes, non-woven bags, gift bags, pearl clothing, baseball caps, fabric gift boxes, etc. Make your travel outfit unique .

- T-shirt
- Denim/Jeans
- Canvas
- H o odies
- Backpacks.
- L a n yards
- Shoes
- G i f t Bags
- Baseball Caps
- Fabric Gift Boxes
- Sweaters and more.....



E-620 DTF Max Features

HIGH VOLUME DTF PRINTING SOLUTION



● Sprinkler free installation

After you receive the printer, there is no necessary to install the print heads. After installing the ink and simple debugging, it can be printed directly.



● Tension bar media feeding system

The intelligent tension bar film feeding system makes feeding more accurate and stable.



● Automatically moisturize online

To prevent the ink from clogging the heads, moisturizer at regular intervals to keep the heads clean and moist. Online humidification system, which can keep the best working condition of the.



● Electric pinch roller control systems

The electric control pinch roll, the PET film evenly stressed, feeding more accurate, one-button easy operation.



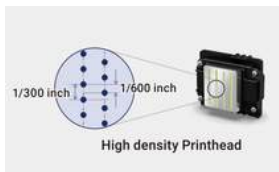
● Print Heads base heating

The print heads base has an external heating function, make the printer can work normally in an environment with large temperature differences, ensure good ink mobility during the printing process.



● THK mute guide

Imported high quality THK guide. Highly stable printing with low noise and with longer life, the first choice for high-end inkjet printers.



● Nozzle broken hole compensation technology

The printer can automatically monitor the printing process during the printing process, and will compensate if there is an problem of printing leakage to ensure the perfect output.



● Powder Control System

Better control the precise amount of powder, avoid unnecessary waste, reduce the number of powder return & powder pouring, reduce manual operation costs.

CHROMOJET

HIGH VOLUME UV PRINTING SOLUTION

UV Flatbed Printing

The charming AINKJET multi-functional flatbed printer can be used for not only sheet fed but also objects with non-flat surfaces, such as glass bottles, water cups, personalized mobile phone cases, gifts, promotional souvenirs, etc. Suitable for printing on: flat or cylindrical objects such as mobile phone case, metal, acrylic, plastic, PVC, glass, ceramics, wood, leather, etc

The New Upgrade

We continuously improve and upgrade according to customer feedback, AINKJET series is our best rebate for customer feedback, More UV flatbed format options.

Humanized Design

AINKJE series is created for anyone within the printing industry Be it beginner or expert AINKJET series will accommodate any needs required by its owner. From super easy startup to the state of the art RIP software, with AINKJET UV flatbed printer anyone can create outstanding print jobs with minimal effort.

HIGH QUALITY UV AND VARNISH INK

AINKJET UV inks are specially developed to ensure vivid colors and maximum fastness on wide range of hard materials. Varnish printing application presents more personalized solution requirements .

RELIABLE UV PRINTING SOLUTION

Every component in AINKJET UV printer is designed to last -High precision timing components
On demand Piezzo print head Durable ink components -Sturdy exterior

UV Printing GOAL

- Make it affordable to anybody within the printing industry
- Create compact and reliable uv printing solution
- Reduce amortization time to a minimum
- Fast installation and easy to use -customer satisfaction

Multifunctional

UV flatbed Printer



Multifunctional UV Flatbed Printer

A-6042 UV

HIGH VOLUME
UV PRINTING SOLUTION



• Technical Specifications

Model	A-6042 UV	
Printing Technology	Double i1600-U1 / i3200-U1 Print Heads	
Print Head	Piezoelectric Inkjet	
Printing Width	600*420(mm)	
Acceptable Media	Width	≤600(mm)
	Thickness	≤180(mm)
Ink Cartridges	Capacity	Color Siphon + Regular Mixing of White Ink
	Color	W+CMYK+Varnish
Printing Resolution	Maximum 2400 dpi	
Speed	720x900dpi (Finish Printing an A2 sheet in 10 mins)	
Ink Curing Method	Dual UV LED Lights	
Power	1300W	
Interface	Gigabit Ethernet	
Power Supply	AC 220V ± 5%, 16A 50HZ ±1	
Dimensions(with stand)	1572mm(W)x960mm(D)x925mm(H)	
Weight(with stand)	200 kg	
Environment	Power on	Temperature: 59 F to 90 F [15 C to 32 C] / Humidity: 35 to 80% (no condensation)
	Power off	Temperature: 41 F to 104 F [5 C to 40 C] / Humidity: 20 to 80% (no condensation)

UV DTF Printer

Equipment composition : UV Flatbed Printer / Laminating machine

Ink Type : UV Ink ● Ink Color : CMYK / White / Varnish

Printing Media : Transfer of hard materials flat or cylindrical objects such as CD, card, Udisk, mobile phone case, metal, acrylic, plastic, PVC, glass, ceramics, wood, leather, etc

Related Consumables : UV Ink / AB Film / Glue

Printing Steps : 1. Software processes design 2. Install A film 3. Press print button
4. Laminating transfer film 5. Transferring 6. Tear off the transfer film



DTF Printer

Equipment composition : Printing Machine /Power Shaker Machine/Heat Press Machine

Ink Type : DTF Ink ● Ink Color : CMYK / White / Fluorescent Color

Printing Media : Transfer of soft materials Leather, linen, polyester, cotton and some other textile material

Related Consumables : DTF Ink / PET Film / Hot Melt Adhesive Powers

Printing Steps : 1. Software processes design 2. Printed the design 3. Powder shaker
4. Oven drying 5. Hot Transfer Press 6. Tear off the PET film

CHROMOJET Multifunctional UV Flatbed Printer

A-6090 UV

HIGH VOLUME
UV PRINTING SOLUTION



• Technical Specifications

Model	A-6090 UV	
Printing Technology	Double i1600-U1 / i3200-U1 Print Heads	
Print Head	Piezoelectric Inkjet	
Printing Width	600*900(mm)	
Acceptable Media	Width	≤600(mm)
	Thickness	≤180(mm)
Ink Cartridges	Capacity	Color Siphon + Regular Mixing of White Ink
	Color	W+CMYK+Varnish
Printing Resolution	Maximum 2400 dpi	
Speed	720x900dpi (Finish Printing an A2 sheet in 10 mins)	
Ink Curing Method	Dual UV LED Lights	
Power	1300W	
Interface	Gigabit Ethernet	
Power Supply	AC 220V ± 5%, 16A 50HZ ±1	
Dimensions(with stand)	1770mm(W)*1600(D)mm*1020mm(H)	
Weight(with stand)	300 kg	
Environment	Power on	Temperature: 59 °F to 90 °F [15°C to 32°C] / Humidity: 35 to 80% (no condensation)
	Power off	Temperature: 41 °F to 104 °F [5°C to 40°C] / Humidity: 20 to 80% (no condensation)

UV DTF Printer

Equipment composition : UV Flatbed Printer / Laminating machine

Ink Type : UV Ink ● Ink Color : CMYK / White / Varnish

Printing Media : Transfer of hard materials flat or cylindrical objects such as CD, card, Udisk, mobile phone case, metal, acrylic, plastic, PVC, glass, ceramics, wood, leather, etc

Related Consumables : UV Ink / AB Film / Glue

Printing Steps : 1. Software processes design 2. Install A film 3. Press print button
4. Laminating transfer film 5. Transferring 6. Tear off the transfer film



DTF Printer

Equipment composition : Printing Machine /Power Shaker Machine/Heat Press Machine

Ink Type : DTF Ink ● Ink Color : CMYK / White / Fluorescent Color

Printing Media : Transfer of soft materials Leather, linen, polyester, cotton and some other textile material

Related Consumables : DTF Ink / PET Film / Hot Melt Adhesive Powers

Printing Steps : 1. Software processes design 2. Printed the design 3. Powder shaker
4. Oven drying 5. Hot Transfer Press 6. Tear off the PET film

CHROMOJET

CHROMOJET

Multifunctional UV Flatbed Printer

SPECIAL UV DTF PRINTING SOLUTION

UV DTF PRINTER With the rapid development of science and technology, people have shown unprecedented progress in the processing and presentation of image patterns. In order to meet the personalized demands of users and meet the needs of designers, UV flatbed printer has emerged as the times require, and its patterns are realistic and layered. The advantages of richness, high artistry, and strong stereoscopic effect make UV flatbed printer the first choice for hot image output.

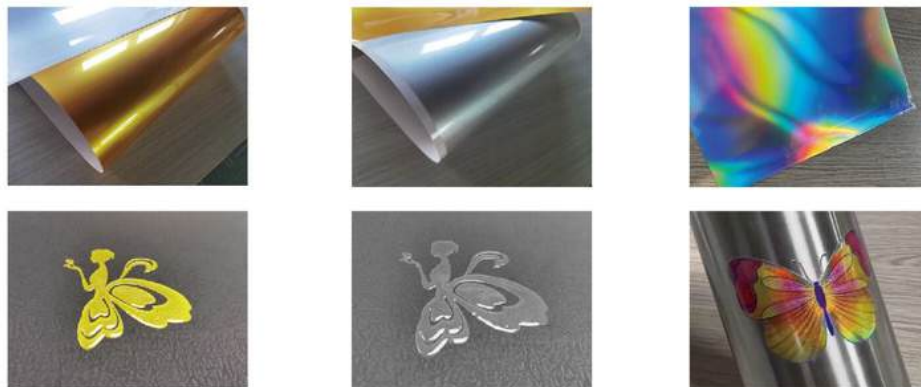
UV DTF PRINTING SOLUTION

UV DTF printing is especially suitable for transferring UV ink to special shapes and materials that are not suitable for direct printing by UV ink. UV DTF Make you more easy to entry label market

- UV Direct Print Effect
- No Heating Process Required
- No Drying Process Required
- Good Adhesion on Curved, or Rugged Surface

DTF supports wide range of printing supplied

Direct to film comprehensive solution is a new technology of the digital revolution, The biggest advantage of this new technology is that after printing, it can be directly attached to the substrate to be transferred without other processing.



UV DTF INKS

All our UV DTF inks are specially developed and test to ensure vivid colors and maximum fastness

- Scratch resistant
- Vivid colors



CMYK + W + Varnish



CHROMOJET Multifunctional UV Flatbed Printer HIGH VOLUME UV PRINTING SOLUTION

- **4 colors + white & varnish are more expressive**

Equipped with 6 ink tanks, 4 colors of ink can be installed. It can finish exquisite shading with high precision. In addition, using white ink and clear varnish, it has rich expressive power and fulfills various needs.

- **High-Performance inks for a variety of applications**

It is an eco-friendly UV ink with excellent color development and color reproducibility. It is cured by ultraviolet radiation. In addition to bright colors and style, it also has strong adhesion.

- **Printing designed for customizations**

The electric cylinder fixture supports 360 ° rotation printing. With cylinder fixture installed on the flatbed, OR-6042UVA can print media up to 180mm height.



- **Print Varnish and relief effects**

The heads of white color varnish ink jet at the same time, which can produce D relief and multi-layer transparent bump effect, including amazing varnish glossy effect and matte finish.

- **Epson i1600-U1 / i3200-U1 Print Head**

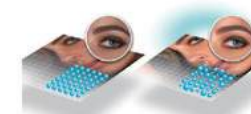
PrecisionCore Technology a. MEMS manufacturing and thin film piezo element can realize high precision and high density (600 npi/2 rows of nozzles). Contributes to compact, high speed, high quality, and high image quality. Precision made of Epson unique MEMS nozzles and an ink flow path ensure the perfectly round ink droplets are placed accurately and consistently.



i3200-U1



i1600-U1



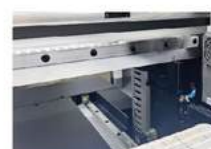
High quality output, simple and efficient operation OR-6042UVA multifunctional flatbed contains many advanced functions to complete high-quality printing jobs with simple operations.



High precision vacuum flatbed made of aluminum alloy with a turbofan installed below can fix the media firmly.



The overall printer cover can improve the operation safety, reduce the adhesion of dust in the printing process and ensure the printing quality.



Up to 180mm media thickness. The beam can rise to 180mm to print customized products.

Applications of UV Flatbed Printer

Print magic UV ink on magic film. Get ready to design and make your "image" without the traditional molding process, and no more minimum order quantity for your customer. Magic film can be applied easily on non-flat surface for printing image transfer, and works well on various materials, such as plastic, glass, metal, ceramics, leather, wood, and other soft or hard materials.

- | | |
|---------------------------------------|----------------|
| Plastic | Glass |
| Ceramics | Metal |
| Leather | Glass stickers |
| Wood | packibg box |
| and other soft or hard materials..... | |



CHROMOJET

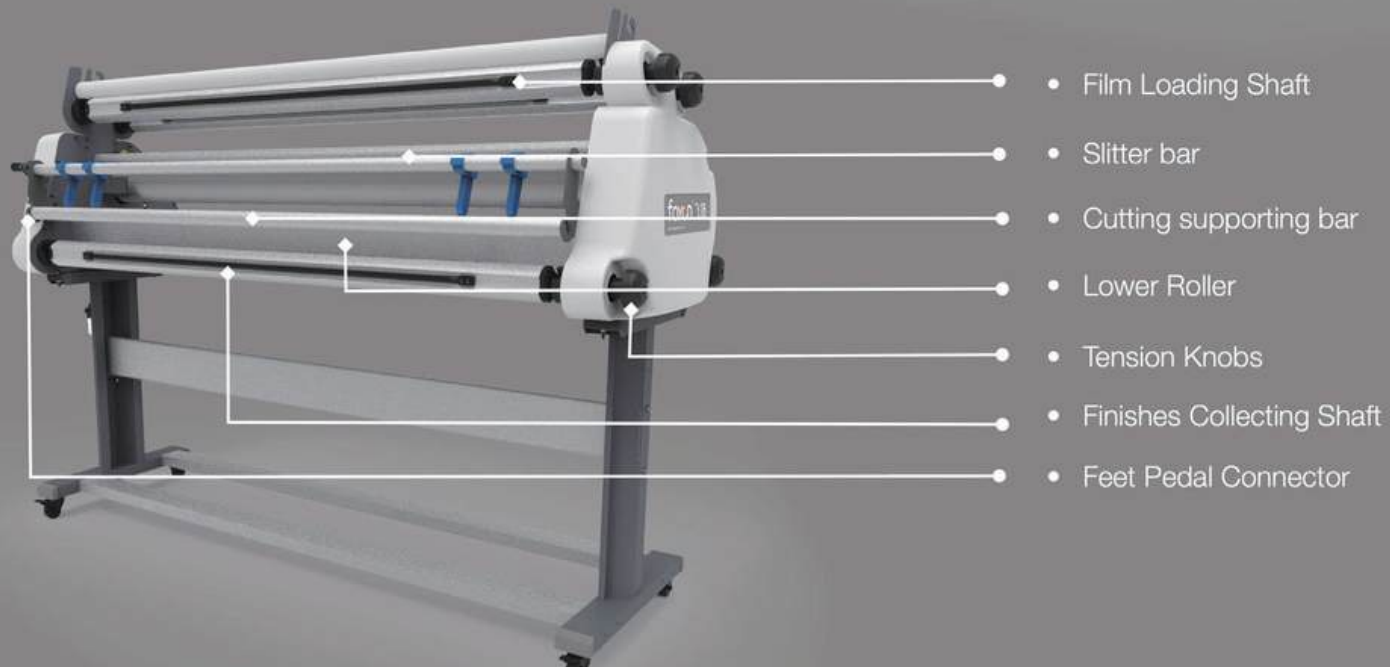
FY-1600DA Roll to Roll laminator

User Manual



Please read this operating instructions before installation and keep this for later use.

DIAGRAM OF WHOLE MACHINE



INSTRUCTION OF CONTROL PANEL/BACK PANEL



- * **Hot light:**
 - ✦ lighting means the machine roller working under hot state
- * **Cold light:**
 - ✦ lighting means the machine roller working under cold state
- * **Ready light:**
 - ✦ lighting means the roller surface temperature has reached the set value
- **Hot/cold switch:**
 - ✦ Control the switch of hot/cold model
- **M/A switch:**
 - ✦ under Auto model, the machine can keep running at the speed set;
 - ✦ under Manual model, the machine is controlled by the feet pedal.
- **Forward/backward switch:**
 - ✦ Control the direction the roller running, usually used during film installing.
- **Speed adjust button:**
 - ✦ Just adjust the working speed

➔ About setting:

Press the **Set** button for first time, we will enter the temperature setting environment, here we can set the temperature of laminating.

Press the **Set** button for second time, we will got the interface of inputting the code, this is by our factory, ignore it please.

Press the **Set** button for third time to end up your setting.

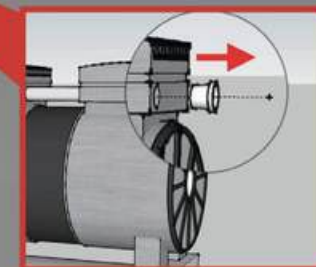
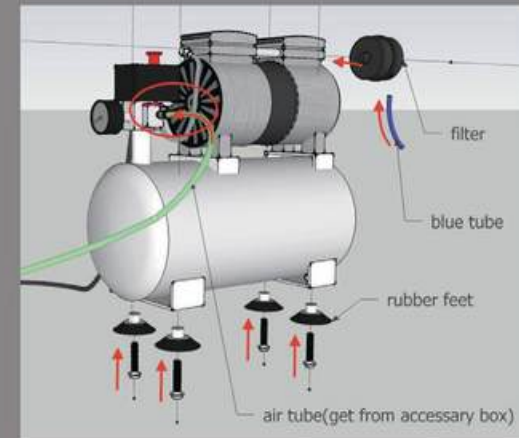


- Power Switch
- Fuse 1A box
- Fuse 15A box
- Power Cable Connector
- Feet Pedal Connector

CONNECT THE AIR COMPRESSOR

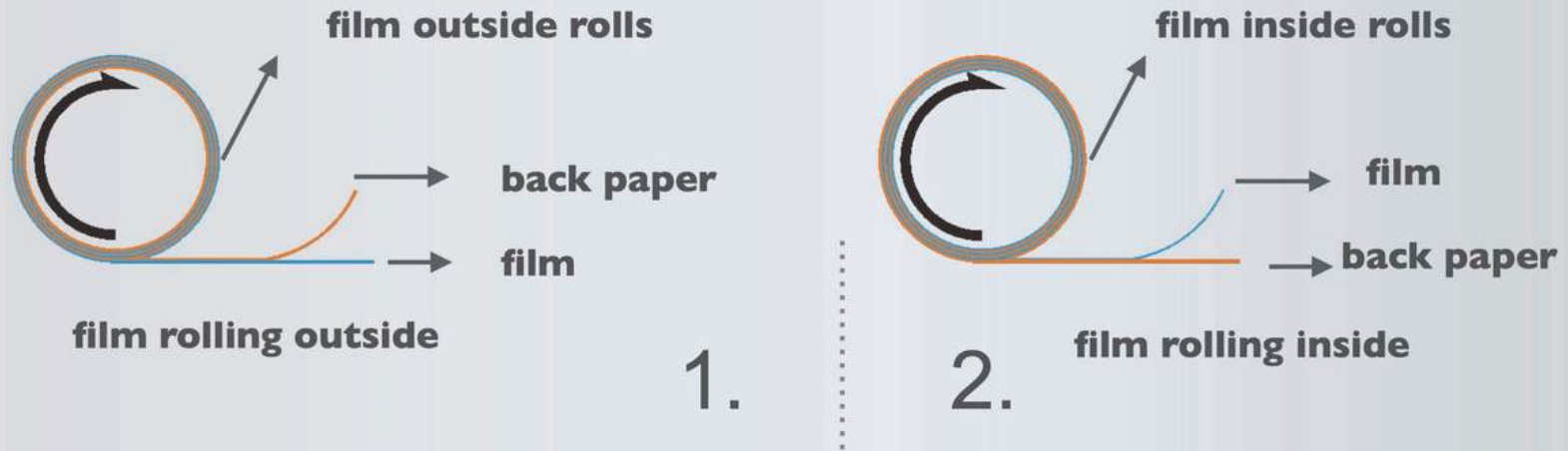
- Take out the air compressor from the package, install four units of rubber feet.
- Take off the white PVC plug on the coupling fin block, twist the black filter into the hole, then plug the blue tube into the hole at the bottom of the filter.
- Take out the air tube from the accessory box, then plug one end into the interface on the compressor, the other end into the interface on the water-oil separator on the machine leg.
- Plug the power cord into the socket.

✦ **Air compressor connection finished!**

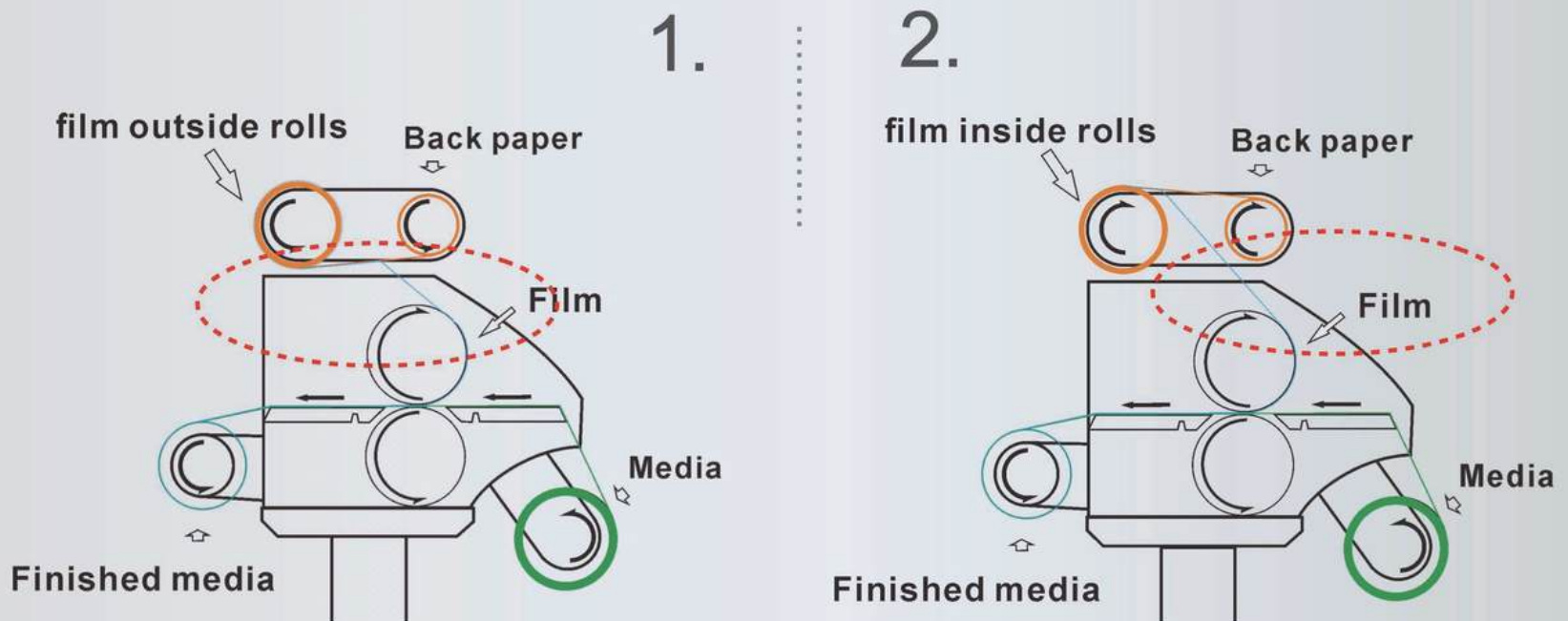


Working schematic diagram

There are two types of film rolling on the market:



Accordingly, there are two types of film installing as below, please take more attention on the running direction:



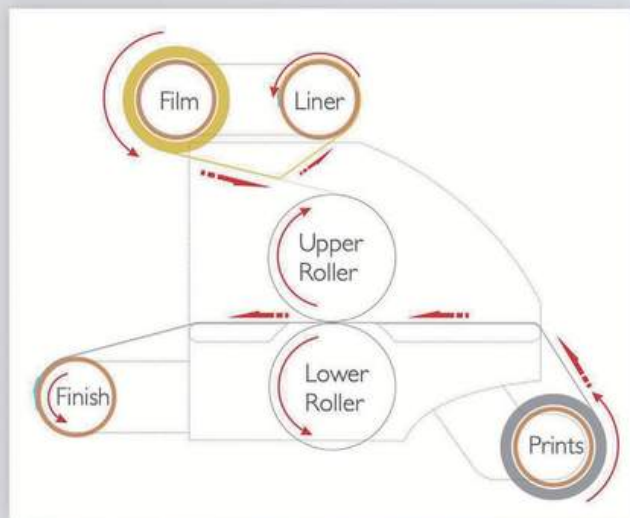
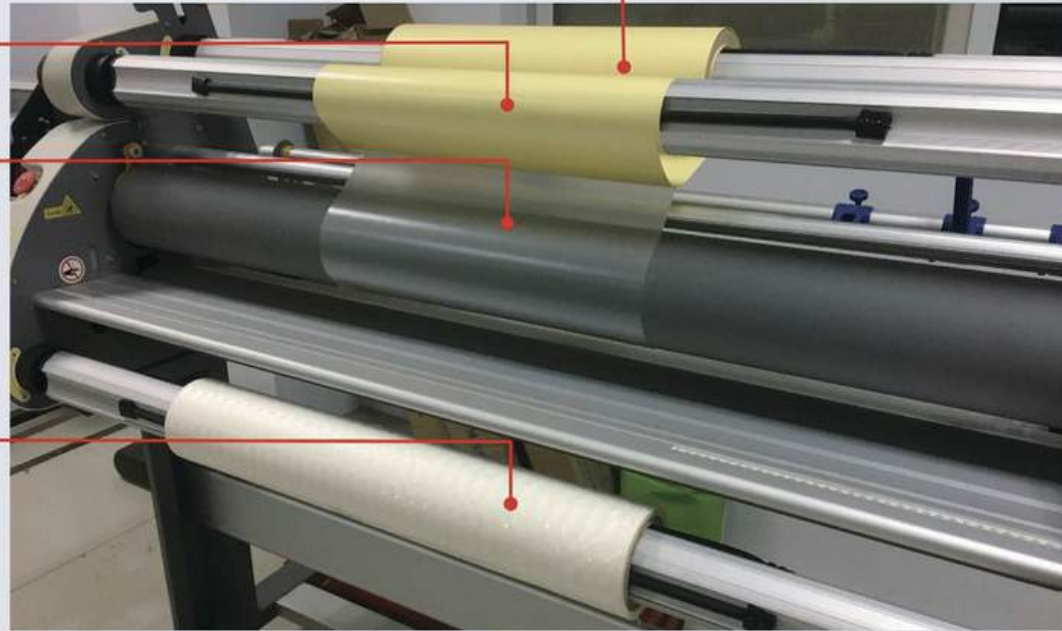
Working Diagram

Film Loading Position

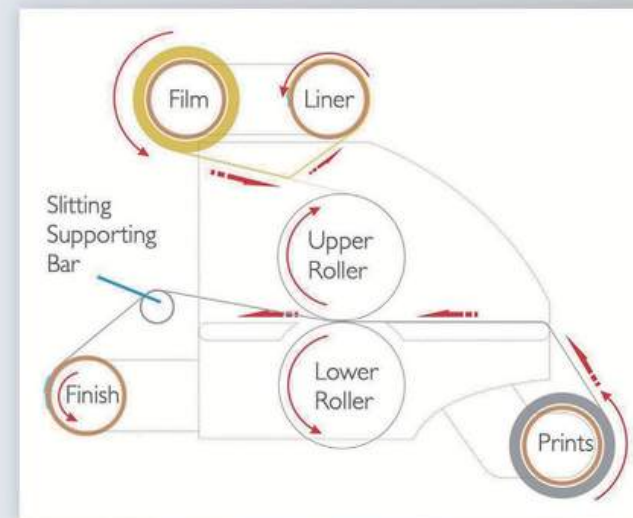
Film-liner Collecting Position

Film

Prints Loading Position



Working Diagram without Slitting



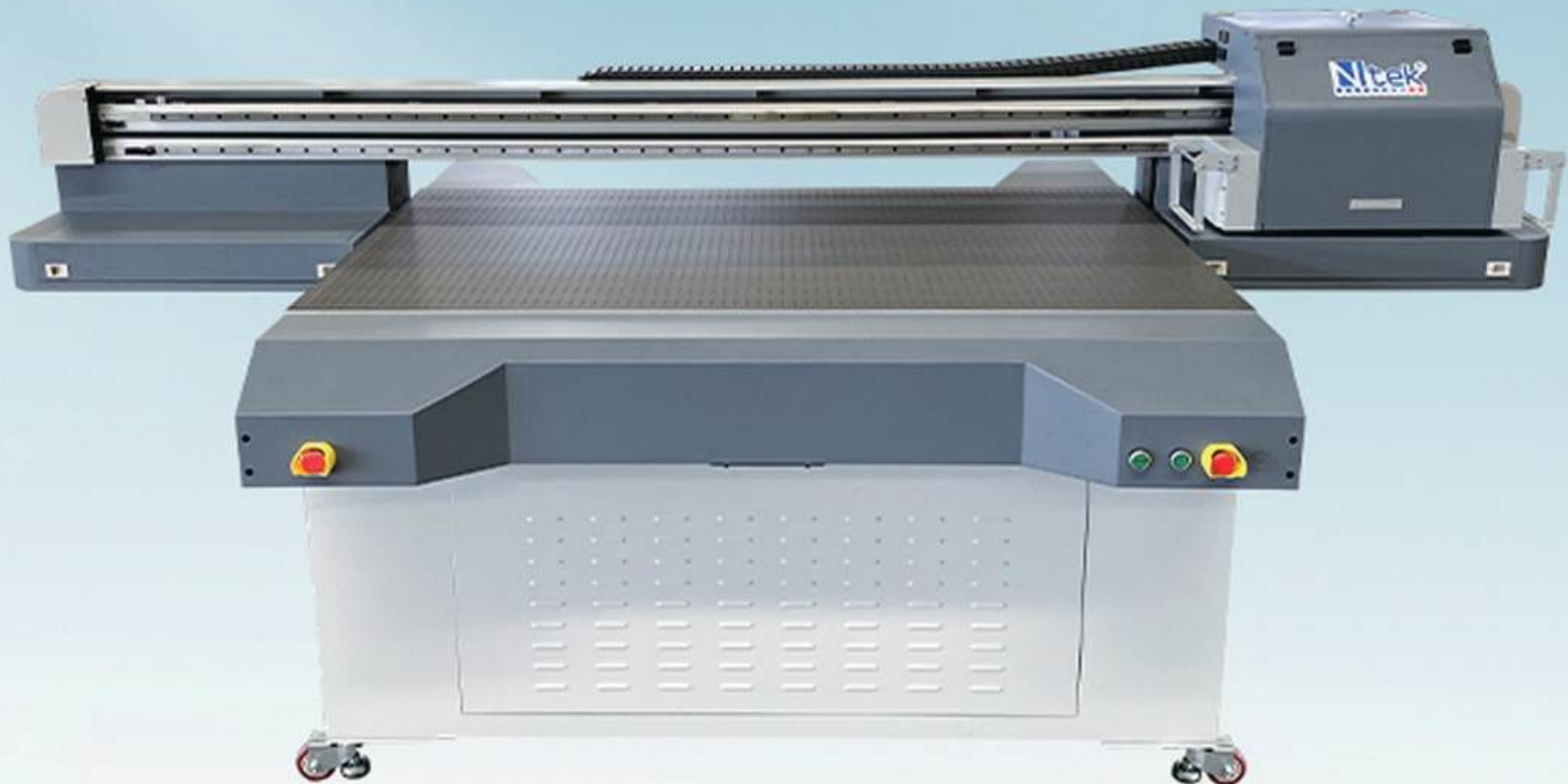
Working Diagram with Slitting

CHROMOJET

UV FLATBED PRINTER

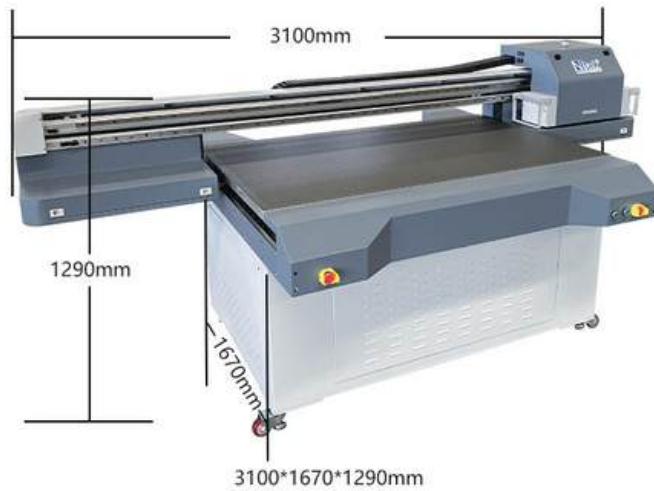
BRAND GUARANTEE / HIGH SPEED AND STABILITY / ONE-BUTTON PRINTING

CUSTOMIZED PRINTING SOLUTION IS AVAILABLE



Product

Parameters And Specifications



Specifications

Product Model	YC1610		
Printhead Type	EPSON		
Printhead Number	2-4 heads		
Ink Characteristics	UV Curing Ink		
Ink reservoirs	Refillable on the fly while printing/1000ml per color		
LED UV Lamp	more than 30000-hours life		
Printhead arrangement	CMYKW V Optional		
Printhead Cleaning System	Automatic Cleaning System		
Guide Rail	Taiwan HIWIN		
Working Table	Vacuum Sucking		
Printing Size	1600*1000mm		
Print Interface	USB2.0/USB3.0/Ethernet Interface		
Media Thickness	0-100mm		
Print Resolution& Speed	720X720dpi	4PASS	4-16sqm/h
	720X1080dpi	6PASS	3-11sqm/h
	720X1440dpi	8PASS	2-8sqm/h
Life of printed image	3 years(outdoor),10years(indoor)		
File Format	TIFF,JPEG,Postscript,EPS,PDF etc.		
RIP Software	RIP/Photoprint optional		
Power Supply	220V 50/60Hz(10%)		
Power	3100W		
Operation Environment	Temperature 20 to 30 °C,Humidity 40% to 60%		
Warranty	12 months exclude the consumables		
Above specification subject to change without notice beforehand			

Product Details

Quality Assurance

01

Epson Print Head



Equipped with Japanese Epson DX5/DX7/XP600/TX800/3200 heads with 180 nozzles 6 or 8 channels, which provides a high-precision printing.

02

High Precision Mute Linear Guide Rail

Adopting HIWIN mute double linear guide rail which is high resolution, low noise and durable, to ensure the carriage moving smoothly, inks eject more stably.



03

High Mute Drag Chain

Utilize high mute drag chain on X axis, ideal for protection of cable and tubes under high speed motion. With high performance, low noise, make the working environment more comfortable.



04

Sectional Vacuum Suction Platform

Sectional vacuum suction platform, easily choose the vacuuming sections, good for various sizes of personalized printing. With full cover for bleeding printing, it will improve the utilization of materials.



05

Taiwan HIWIN Screw Rod

Adopting dual-level precision screw rod and imported Panasonic servo synchronous motors, ensure the screws rod on the both sides of Y axis synchronous running.



06

High Precision Aluminum Beam

Equipped with self-researched cold drawn and high-strength aluminum beam, applied ultra-strength aerial aluminum material, it ensures printing precision and stability, guarantee the perfect output.



Water-Cooling Machine



Leadshine Servo Motor



Universal Wheel

Image Quality

Bright picture, fresh as before.

Adopt Epson piezoelectric nozzle, the accuracy can reach 2160dpi, the new variable ink drop technology, provide 3/3.5pl ink dot size, can achieve high speed or low resolution cases can also easily achieve high quality picture, to achieve no point printing effect.



Immutable Drops

Variable Drops

CMYK+W+V All three colors at once

The use of gloss oil makes the product more gorgeous gloss and "high gloss" effect, not only makes the surface of the whole picture has a gloss sense, get a more exquisite printing effect, but also can better protect the coating, make the product more durable.



Layer1 Varnish

Layer2 CMYK

Layer3 W

Product

Wide Range Of Application



Photo Case



Decorative Painting



Mouse Pad



Wood Panel



Plastic



Advertising Sign



Fiber



Wall Background



Handicraft



Acrylic



Ceramic Tile



Glass Photo

CHROMOJET

UV Flatbed Printer

Higher Precision / Higher Speed / Green Environmental Protection



Product

Parameters And Specifications



2100*1060*1160mm

Specifications

Product Model	YC6090		
Printhead Type	EPSON		
Printhead Number	2-4 heads		
Ink Characteristics	UV Curing Ink (VOA Free)		
Ink reservoirs	Refillable on the fly while printing 1000ml per color		
LED UV Lamp	more than 30000-hours life		
Printhead arrangement	CMYKW V optional		
Printhead Cleaning System	Automatic Cleaning System		
Guide Rail	Taiwan HIWIN		
Working Table	Vacuum Sucking		
Printing Size	900*600mm		
Print Interface	USB2.0/USB3.0/Ethernet Interface		
Media Thickness	0-100mm		
Life of printed image	3 years(outdoor),10years(indoor)		
File Format	TIFF,JPEG,Postscript,EPS,PDF etc.		
Print Resolution& Speed	720X600dpi	4PASS	4-16sqm/h
	720X900dpi	6PASS	3-11sqm/h
	720X1200dpi	8PASS	2-8sqm/h
Life of printed image	3 years(outdoor),10years(indoor)		
File Format	TIFF,JPEG,Postscript,EPS,PDF etc.		
RIP Software	RIP/Photoprint optional		
Power Supply	220V 50/60Hz(10%)		
Power	3100W		
Operation Environment	Temperature 20 to 30 °C, Humidity 40% to 60%		
Machine Dimension	2100*1060*1160mm		
Packing Dimension	2435*1225*1335mm		
Weight	400kg		
Warranty	12 months exclude the consumables		
Above specification subject to change without notice beforehand			

Product Details

Quality Assurance

01

Epson Print Head

Equipped with Japanese Epson DX5/DX7/XP600/TX800/13200 heads with 180 nozzles 6 or 8 channels, which provides a high precision printing.



02

Ink Characteristics

Use non-VOC environmental UV curing ink, clear and perfect printing quality, no bias color, no mixing color, waterproof, wear-resistant. Color with CMYK white and varnish optional for glossy surface printing.



03

Lift cap station system

High quality Automatic ink absorption cleaning control unit, which could greatly extend print head life span.



04

Vacuum Suction

The vacuum suction platform is easy to operate and save energy, good for various sizes of personalized printing. With full cover for bleeding printing, it will improve the utilization of materials.



05

High Mute Drag Chain

Utilize high mute drag chain on X axis, ideal for protection of cable and tubes under high speed motion. With high performance, low noise, make the working environment more comfortable.



06

High Precision Mute Linear Guide Rail

Use high precision mute liner guide rail, long service life, high stability, immensely decrease noise while printer is printing, within 40dB while printing.

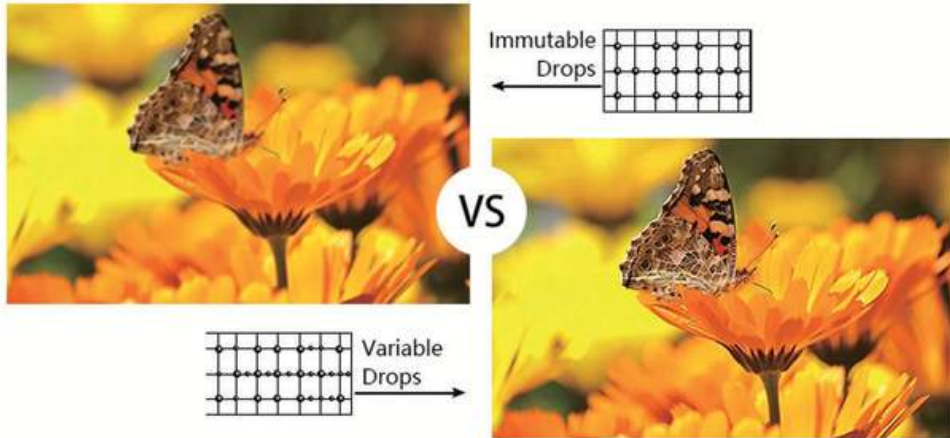


Image Quality

Bright picture, fresh as before.



Adopt Epson piezoelectric nozzle, the accuracy can reach 2160dpi, the new variable ink drop technology, provide 3/3.5pl ink dot size, can achieve high speed or low resolution cases can also easily achieve high quality picture, to achieve no point printing effect.



CMYK+W+V All three colors at once

The use of gloss oil makes the product more gorgeous gloss and "high gloss" effect, not only makes the surface of the whole picture has a gloss sense, get a more exquisite printing effect, but also can better protect the coating, make the product more durable.



Product

Wide Range Of Application



Photo Case



Floor Mat



Ceramic Tile



Glass Photo



Advertising Sign



Plastic



Wood Panel



Pen



Car Sticker



Wall Background



Glass Cup



Mouse Pad

CHROMOJET

V Series

Reliable cutting/plotting quality,
intuitive operation, easy use

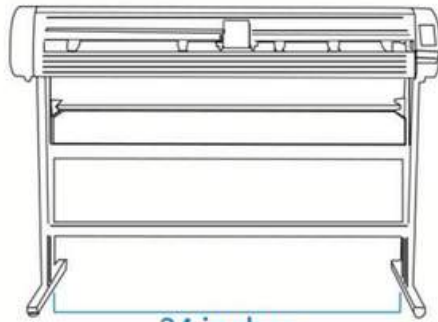


Size Lineup

Three sizes to match all requirements.

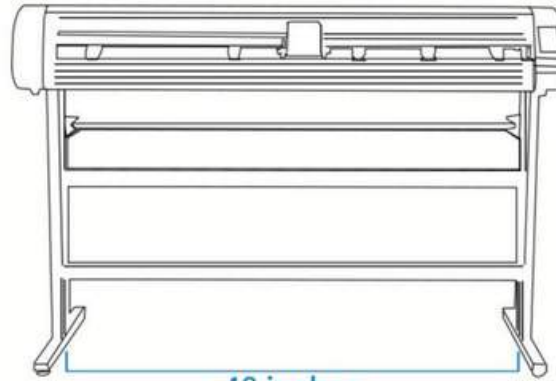


VAH 24



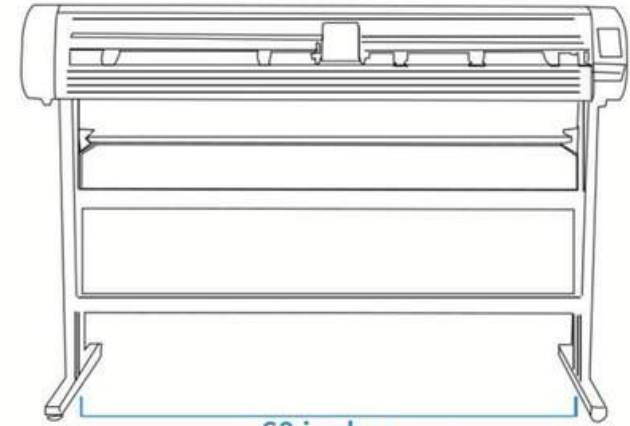
24 inches

VAH 48



48 inches

VAH 60



60 inches

Expanded industrial applications

V Series commercial plotter is designed with high-strength full aluminum body, can prevent the machine deformation in a long-term working. It can also enhance the precision and improve the knife force to make it cut more different materials, like reflective film, automobile film, paper, etc. All those materials can be worked with V series.



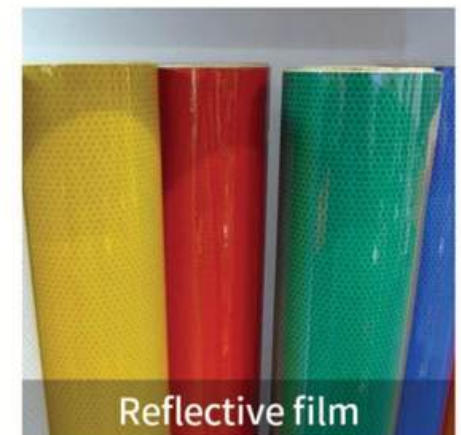
Outer Packaging



Inner Packaging / POP



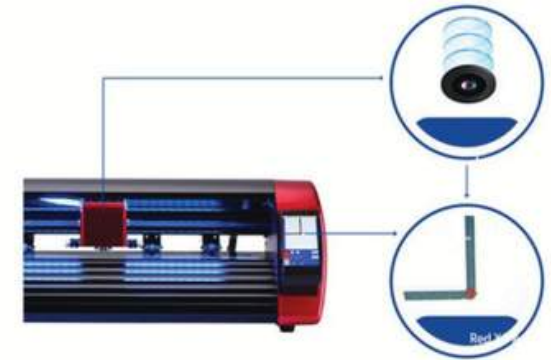
color change film



Reflective film

Visual Positioning with Bulit-in Camera

Adopt real CCD Camera for registration MARK positioning, which is different from CCD sensor or traditional red dot positioning, so that it improves the speed and accuracy by half when utilizing MOMO phase diagram. The application of CCD Camera realizes the visualization of positioning process, because users can instantly judge the accuracy on screen and make adjustments at any time. Besides, the machine is also upgraded to one-key automatic correction function.



Enhanced Stability of Media (5 rollers and high-end steel axes)

5 imported JP steel axes rollers greatly enhance the stability and accuracy. The new design of XY mechanism increases the rigidity of main unit and improves media transportability. Pressure of the 3 middle push rollers can be adjusted in 3 levels (Strong, Medium, Weak), which helps prevent the media from shifting.



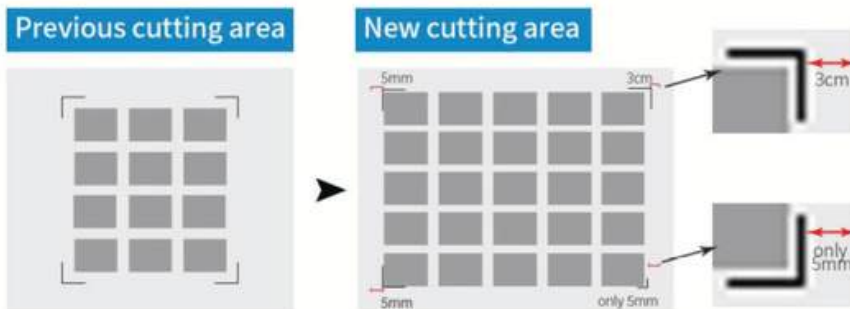
4.3 Inches LED Touch Screen

With 4.3 inches large TFT LCD screen, any operation page can return to homepage by one click. It changes the traditional homepage returning way which users should pressing "return" button for many times. All functions are iconified and help you easily use the machine even the green hand people can operate in a short time.



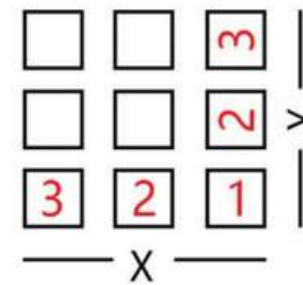
Expanded Cutting Area

The expanded cutting area to include objects outside of the area enclosed by registration marks. Production efficiency is enhanced by reducing media waste.



Special Array Cutting Function

This function makes repeat cutting simpler and more efficient. Users only need to set the number of horizontal cutting and vertical cutting on the device, then the machine automatically repeats its cutting with high speed..



Wifi Network Function

In addition to USB2.0 included as standard, this plotter is also equipped with Wifi module. It enables users to output data from computers and mobile phones regardless of installation location.

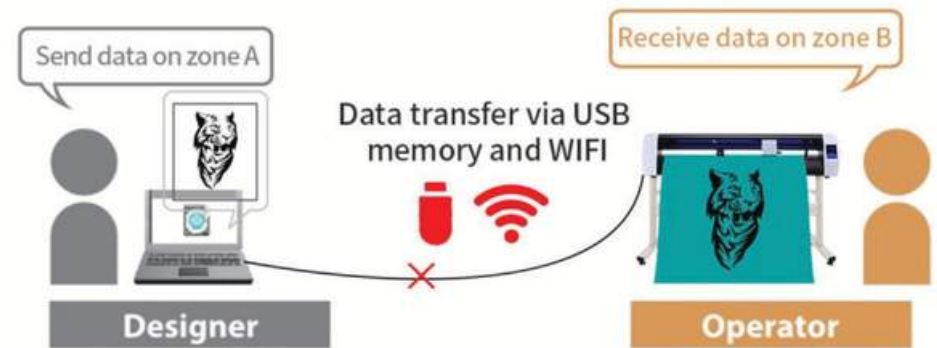
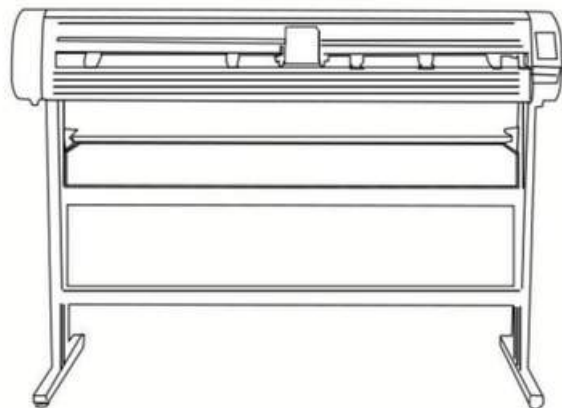
Data Output Via USB Flash Memory Without PC

USB reading port helps users output data directly via USB flash without PC or dedicate software. That is so user-friendly and convenient.

Supports colored marks / specialty media

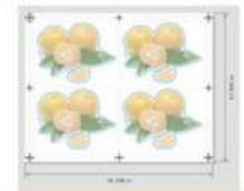
A wide variety of media types including holographic paper and reflective sheets are now compatible due to improvements of the ARMS sensor algorithm.

* Sensor may not be able to read certain combinations of specialty media and colored marks.



Precise Contour Cut Function

With the help of visual positioning function of camera, contour cutting of this device is more remarkable than ordinary plotter especially in cutting precision and overall working efficiency.



Specifications

Item	Descriptions		
Size (max cutting width)	24 inches	48 inches	60 inches
Max feeding width	72cm	135cm	165cm
Max cutting width	63cm	126cm	150m
Gross weight	35kg	58kg	67kg
Packing size(cm)	102*39*42cm	165*40*42cm	194*40*43cm
Cutting head	Single cutting head		
Power	AC100~240V/50Hz~60Hz		
Cache Capacity	128MB		
Optional colors	Red, White		
Multi-language	Support		
Cutting speed	800 mm/s		
Cutting force	50-2000g (160 grade adjustable), capable for various mateial		
Interface / connection	USB Cable, U disk, WIFI		
Support software	SignMaster Cut / Flexi / Signcut / CorelDRAW driver/Easycutstudio		
Cutting precision	<0.01mm		
Supported computer system	Windows2000 / XP / 2003 / win7 / 2003 / win7 / win10; MAC OSX10.2.8 or above		
Repeat cutting	Support, 0.082mm		
Feed material way	Steel axis roller+pinchwheel		
Positioning method	Built-in camera		